

Contract Title Elkford Downtown Core Design Ref # 2441-001278-00Author Kevin Mohr, P.Eng Date May 9, 2022

Item #	Section	Description	
1	Form of Tender – Appendix A – Schedule of Quantities and Prices	Re-issue and replace Division 26 – Electrical of the Form of Tender Appendix A - Schedule of Quantities and Prices with the attached.	
2	Form of Agreement – Schedule 3 List of Contract Documents	Add:	
		Sheet #	Sheet Title
		E100	Pathway Lighting Electrical Site Plan
		E101	Pathway Lighting Electrical Site Plan
		E102	Pathway Lighting Electrical Site Plan
		E103	Pathway Lighting Specifications & Details
Questions and Answers			
		N/A	

List of attachments:

1. Rev 2 Division 26 – Electrical Form of Tender Appendix A – Schedule of Quantities and Prices
2. Drawings E100-103 – Pathway Lighting Site Plans and Specifications & Details

Tenderer's Signature

Div 26 - Electrical

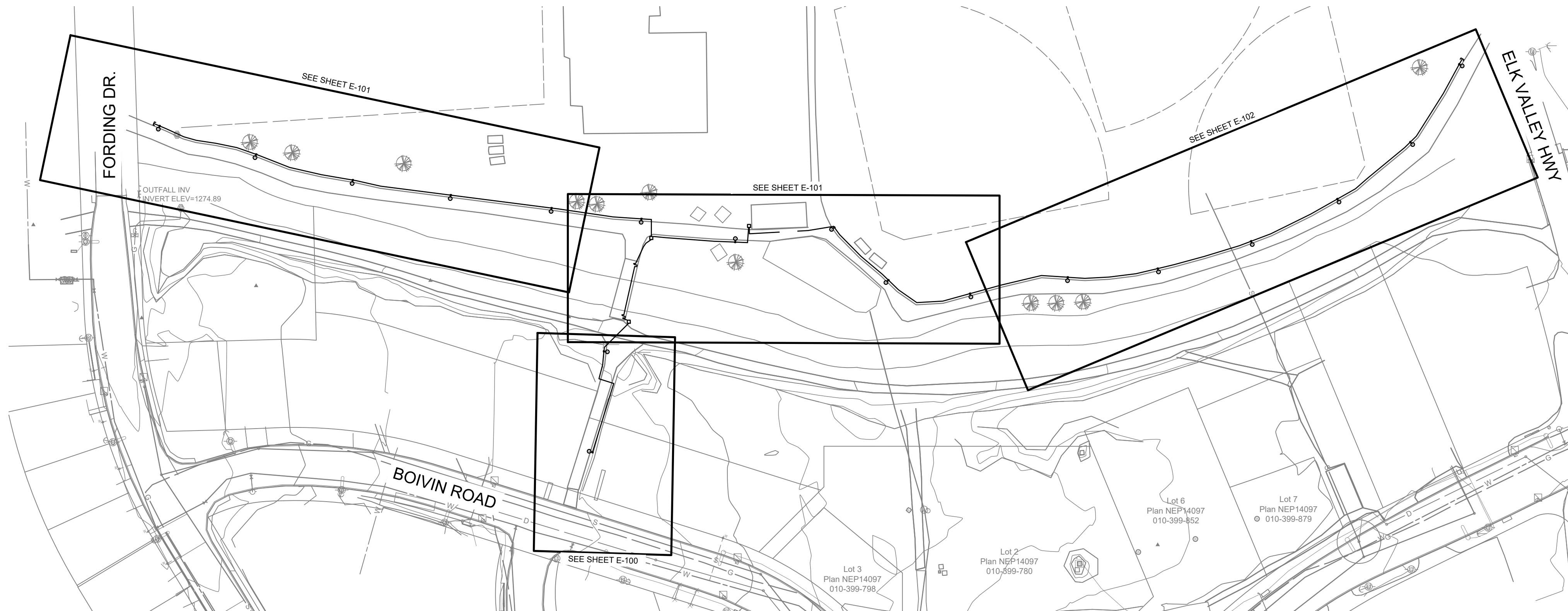
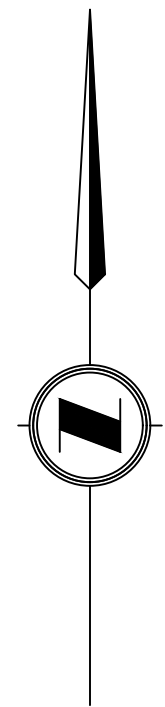
Section	Para	Specification Title	Unit	Quantity	Unit Price	Amount
26 56 01		Roadway Lighting (DWGs E001-002)				
26.1	1.9.1	Streetlight Base - Type C	ea.	25		
26.2		Streetlight Base - Type C1	ea.	3		
26.3		9m Streetlight Pole	ea.	25		
26.4		8.1m Streetlight Pole	ea.	3		
26.5		Streetlight cobra head luminaire	ea.	28		
26.6		Streetlight service base c/w distribution panel	ea.	3		
26.7		Service connection to existing	LS	1		
26.8		50mm RPVC conduit c/w 3c #10 RW90	lm	1096		
26.9		Trenching and Backfill	lm	1096		

26 56 01		Pathway Lighting (DWGs E100-103)				
26.10		Pathway concrete base - Type B	EA	18		
26.11		5m Pathway Pole	EA	18		
26.12		Decorative pathway luminaire	EA	18		
26.13		In grade junction box	EA	3		
26.14		Service connection to existing	LS	1		
26.15		25mm RPVC conduit c/w 3c #10 RW90	EA	585		
26.16		Trenching and backfill	EA	585		

SUBTOTAL:**Div 26 - Electrical OPTIONAL WORK**

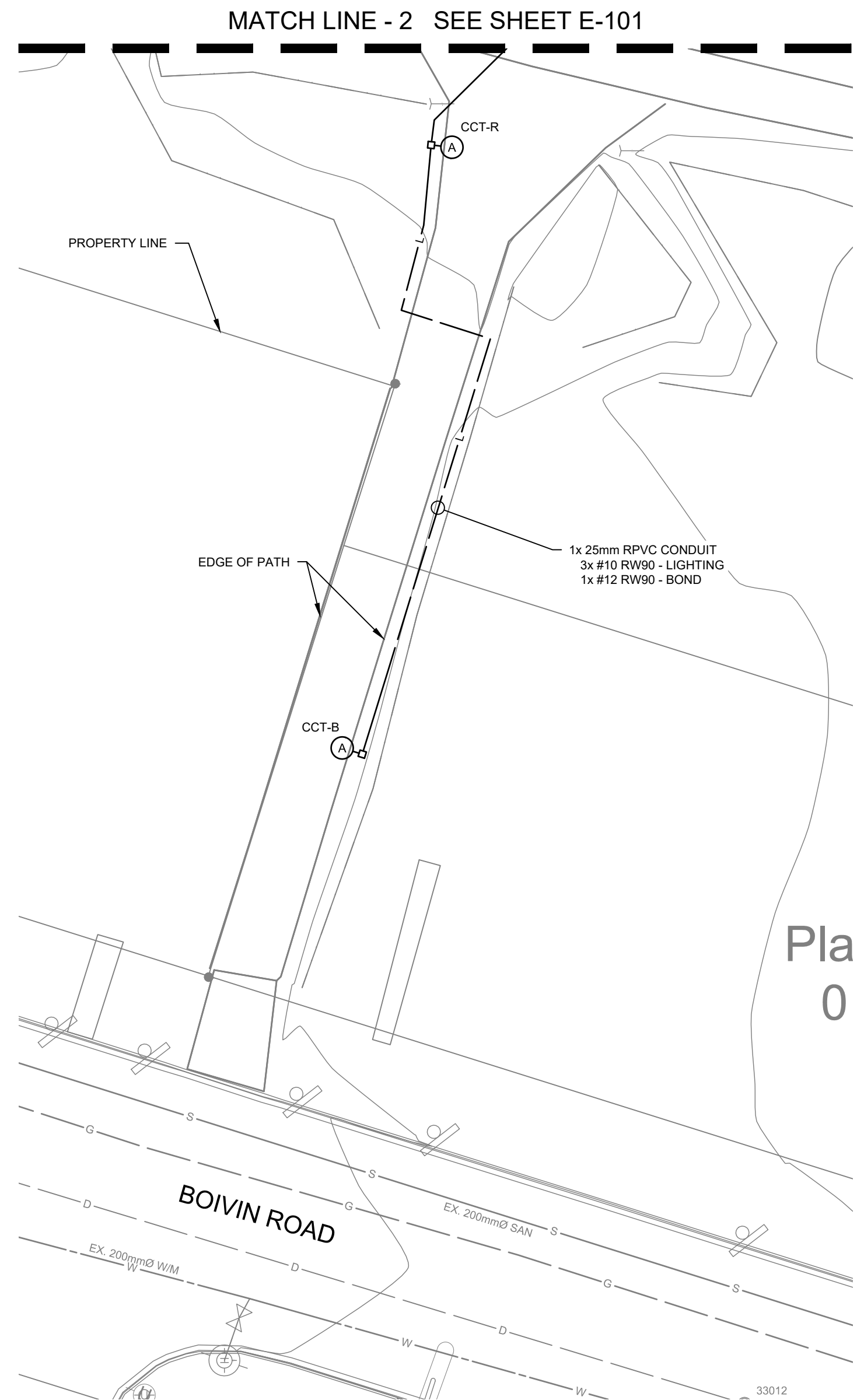
Section	Para	Specification Title	Unit	Quantity	Unit Price	Amount
		BC Hydro Infrastructure Relocation	Lump Sum	1		

DATE: 2022-05-08 16:08 FILE: X:\241\Projects\2441-01278-00_District of Elkford Revitalization Project\10_District of Elkford\01278-E-over.dwg
McElhanney AND D 2021-12-08

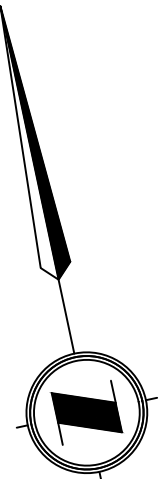


PATHWAY LIGHTING OVERVIEW
SCALE 1:1000

- NOTES:
1. CONDUIT ROUTING AND JUNCTION BOX LOCATIONS ARE SHOWN FOR INTENT ONLY. FINAL CONDUIT ROUTING AND JUNCTION BOX LOCATIONS TO BE ADJUSTED TO SUIT SITE CONDITIONS.
 2. INDICATED LUMINAIRE LOCATIONS ARE SHOWN FOR INTENT ONLY. ADJUST POLE BASE LOCATION AS PER DETAIL ON SHEET E-103.
 3. PROVIDE ALL REQUIRED MATERIALS AND LABOR TO RETURN DISTURBED SURFACES TO EXISTING CONDITIONS, INCLUDING BUT NOT LIMITED TO GRASS, GRAVEL PATH, AND ASPHALT PATH.



PATHWAY LIGHTING PLAN
SOUTH OF BRIDGE
SCALE 1:250



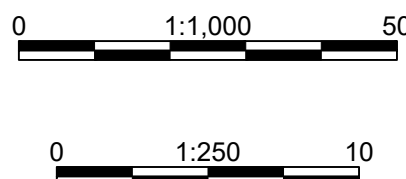
Rev	Date	Description	Drawn	Design	App'd
0	2022-05-06	ISSUED FOR TENDER	NK	EH	TY

THIS DRAWING AND DESIGN IS THE PROPERTY OF McELHANNEY AND SHALL NOT BE USED, REUSED OR REPRODUCED WITHOUT THE CONSENT OF McELHANNEY. McELHANNEY WILL NOT BE HELD RESPONSIBLE FOR THE IMPROPER OR UNAUTHORIZED USE OF THIS DRAWING AND DESIGN.

THIS DRAWING AND DESIGN HAS BEEN PREPARED FOR THE CLIENT IDENTIFIED, TO MEET THE STANDARDS AND REQUIREMENTS OF THE APPLICABLE PUBLIC AGENCIES AT THE TIME OF PREPARATION. McELHANNEY, ITS EMPLOYEES, SUBCONSULTANTS AND AGENTS WILL NOT BE LIABLE FOR ANY LOSSES OR OTHER CONSEQUENCES RESULTING FROM THE USE OR RELIANCE UPON, OR ANY CHANGES MADE TO, THIS DRAWING, BY ANY THIRD PARTY, INCLUDING CONTRACTORS, SUPPLIERS, CONSULTANTS AND STAKEHOLDERS, OR THEIR EMPLOYEES OR AGENTS, WITHOUT McELHANNEY'S PRIOR WRITTEN CONSENT.

INFORMATION ON EXISTING UNDERGROUND FACILITIES MAY NOT BE COMPLETE OR ACCURATE. McELHANNEY, ITS EMPLOYEES AND DIRECTORS ARE NOT RESPONSIBLE NOR LIABLE FOR THE LOCATION OF ANY UNDERGROUND CONDUITS, PIPES, CABLES OR OTHER FACILITIES WHETHER SHOWN OR OMITTED FROM THIS PLAN. PRIOR TO CONSTRUCTION CONTRACTOR SHALL EXPOSE LOCATIONS OF ALL EXISTING FACILITIES BY HAND DIGGING OR HYDROVAC AND ADVISE THE ENGINEER OF POTENTIAL CONFLICTS.

ORIGINAL DWG SIZE: ANSI D (22" x 34")



McElhanney

PO Box 1505
Unit C - 402 Highway 3
Fernie BC
Canada V0B 1M0
T 250 425 0158

Permit

Approved Sealed

DISTRICT OF ELKFORD
744 Fording Drive, Elkford, BC, V0B 1H0

ELKFORD DOWNTOWN REVITALIZATION
PATHWAY LIGHTING
ELECTRICAL SITE PLAN

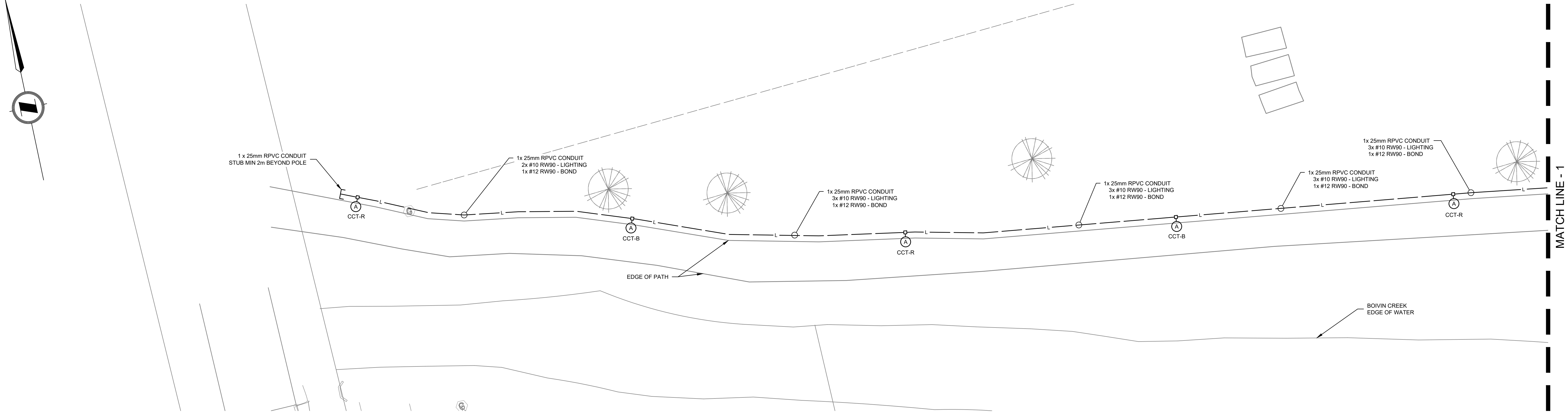
Drawing No.
E-100

Project Number
2441-01278-00

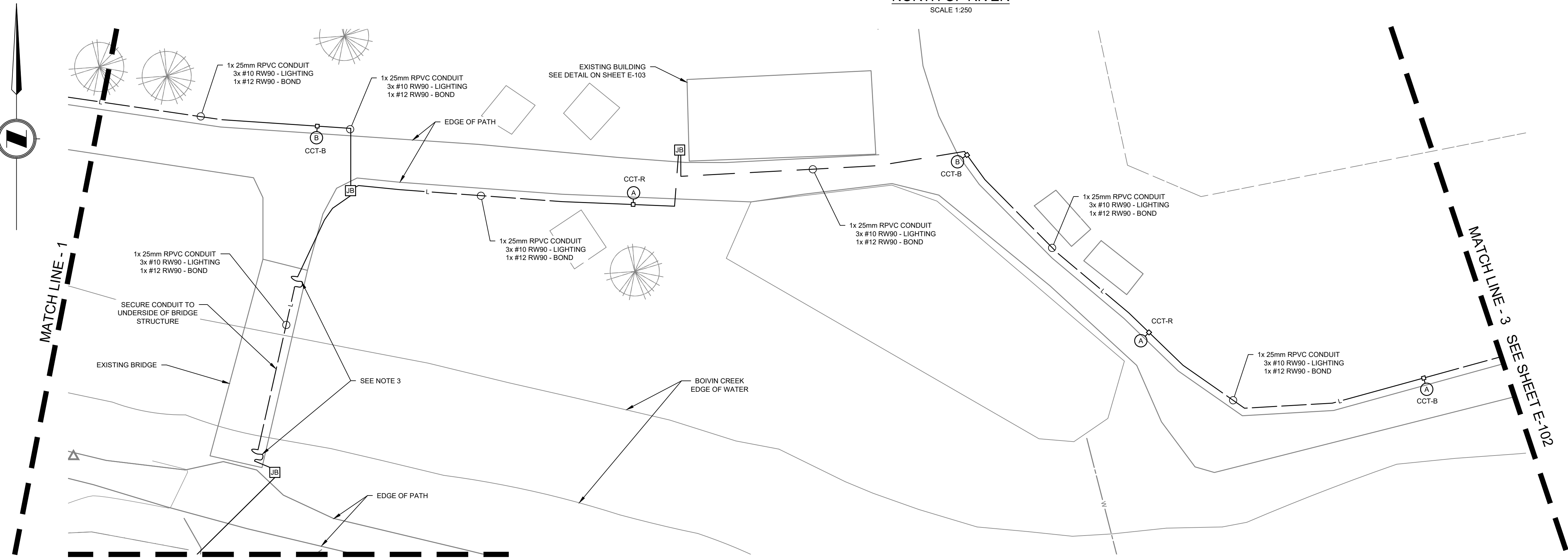
Rev.
0

DESTROY ALL PRINTS BEGINNING PREVIOUS REVISION

DATE: 2022-05-08 16:08 FILE: X:\24\1\Projects\2441\21278-00_Dist Downtown Revitalization Project\10_Drawings\10.10 Electrical\101278-E-101.dwg
McElhanney ANSD D 2021-12-08



WEST PATHWAY LIGHTING PLAN
NORTH OF RIVER
SCALE 1:250



CENTER PATHWAY LIGHTING PLAN
NORTH OF RIVER
SCALE 1:250

- NOTES:
1. CONDUIT ROUTING AND JUNCTION BOX LOCATIONS ARE SHOWN FOR INTENT ONLY. FINAL CONDUIT ROUTING AND JUNCTION BOX LOCATIONS TO BE ADJUSTED TO SUIT SITE CONDITIONS.
 2. INDICATED LUMINAIRE LOCATIONS ARE SHOWN FOR INTENT ONLY. ADJUST POLE BASE LOCATIONS AS PER DETAIL ON SHEET E-103.
 3. BRIDGE IS SUBJECT TO MOVEMENT IN RELATION TO BRIDGE ABUTMENT. UNDERGROUND RPVC CONDUIT TO EMERGE UNDER TO BRIDGE IN A LOCATION NOT PRONE TO MECHANICAL DAMAGE. PROVIDE MINIMUM 500mm OF 25mm LIQUID TIGHT CONDUIT TO CONNECT BRIDGE CONDUIT TO UNDERGROUND CONDUIT. LIQUID TIGHT CONDUIT TO BE INSTALLED IN AN "S" SHAPE, SUCH THAT IT ALLOWS FOR MOVEMENT OF THE BRIDGE WITHOUT STRESSING RIGID CONDUITS.
 4. PROVIDE ALL REQUIRED MATERIALS AND LABOR TO RETURN DISTURBED SURFACES TO EXISTING CONDITIONS, INCLUDING BUT NOT LIMITED TO GRASS, GRAVEL PATH, AND ASPHALT PATH.

Rev	Date	Description	Drawn	Design	App'd
0	2022-05-06	ISSUED FOR TENDER	NK	EH	TY

THIS DRAWING AND DESIGN IS THE PROPERTY OF McELHANNEY AND SHALL NOT BE USED, REUSED OR REPRODUCED WITHOUT THE CONSENT OF McELHANNEY. McELHANNEY WILL NOT BE HELD RESPONSIBLE FOR THE IMPROPER OR UNAUTHORIZED USE OF THIS DRAWING AND DESIGN.

THIS DRAWING AND DESIGN HAS BEEN PREPARED FOR THE CLIENT IDENTIFIED, TO MEET THE STANDARDS AND REQUIREMENTS OF THE APPLICABLE PUBLIC AGENCIES AT THE TIME OF PREPARATION. McELHANNEY, ITS EMPLOYEES, SUBCONSULTANTS AND AGENTS WILL NOT BE LIABLE FOR ANY LOSSES OR OTHER CONSEQUENCES RESULTING FROM THE USE OR RELIANCE UPON, OR ANY CHANGES MADE TO, THIS DRAWING, BY ANY THIRD PARTY, INCLUDING CONTRACTORS, SUPPLIERS, CONSULTANTS AND STAKEHOLDERS, OR THEIR EMPLOYEES OR AGENTS, WITHOUT McELHANNEY'S PRIOR WRITTEN CONSENT.

INFORMATION ON EXISTING UNDERGROUND FACILITIES MAY NOT BE COMPLETE OR ACCURATE. McELHANNEY, ITS EMPLOYEES AND DIRECTORS ARE NOT RESPONSIBLE NOR LIABLE FOR THE LOCATION OF ANY UNDERGROUND CONDUITS, PIPES, CABLES OR OTHER FACILITIES WHETHER SHOWN OR OMITTED FROM THIS PLAN. PRIOR TO CONSTRUCTION CONTRACTOR SHALL EXPOSE LOCATIONS OF ALL EXISTING FACILITIES BY HAND DIGGING OR HYDROVAC AND ADVISE THE ENGINEER OF POTENTIAL CONFLICTS.

0 1:250 10

McElhanney

PO Box 1505
Unit C - 402 Highway 3
Ferre BC
Canada V0B 1M0
T 250 425 0158

Permit

Approved Sealed

DISTRICT OF ELKFORD
744 Fording Drive, Elkford, BC, V0B 1H0

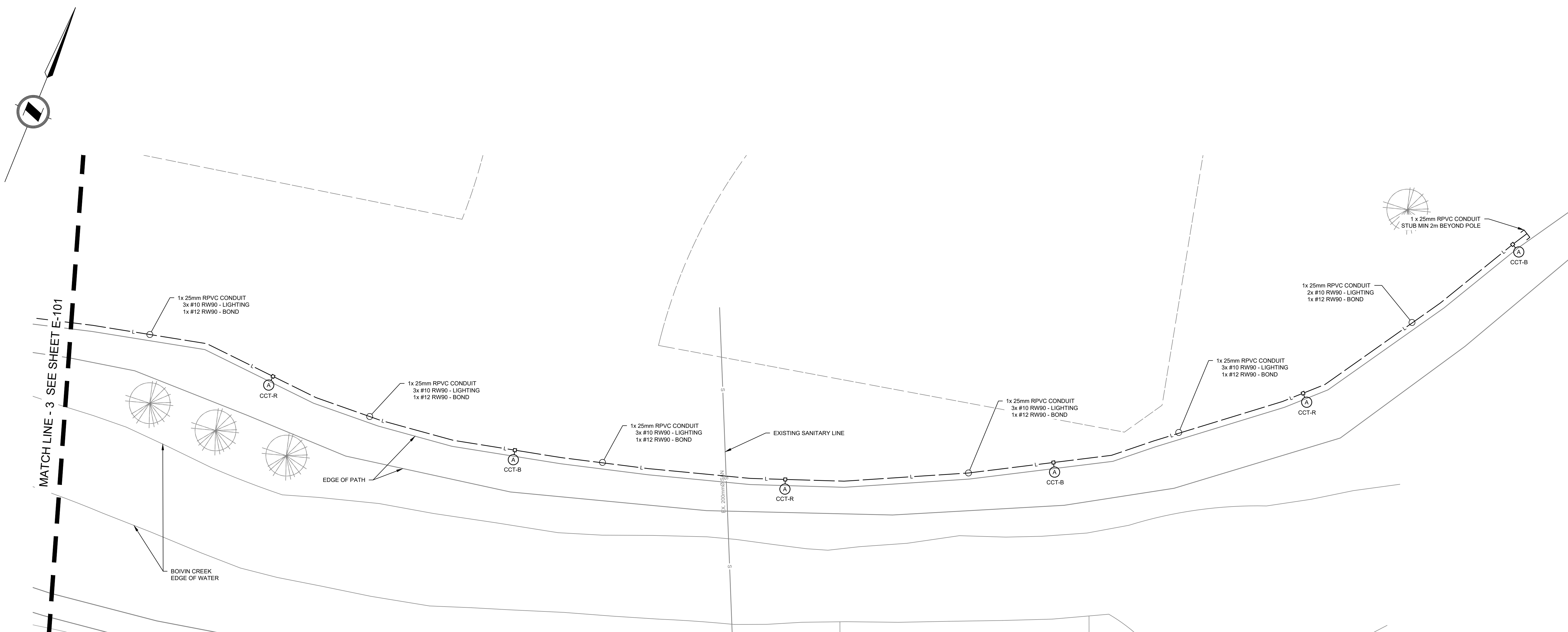
ELKFORD DOWNTOWN REVITALIZATION
PATHWAY LIGHTING
ELECTRICAL SITE PLAN

Drawing No.
E-101

Project Number
2441-01278-00

Rev.
0

DESTROY ALL PRINTS BEARING PREVIOUS REVISION



EAST PATHWAY LIGHTING PLAN

NORTH OF RIVER

SCALE 1:250

- NOTES:
1. CONDUIT ROUTING AND JUNCTION BOX LOCATIONS ARE SHOWN FOR INTENT ONLY. FINAL CONDUIT ROUTING AND JUNCTION BOX LOCATIONS TO BE ADJUSTED TO SUIT SITE CONDITIONS.
 2. INDICATED LUMINAIRE LOCATIONS ARE SHOWN FOR INTENT ONLY. ADJUST POLE BASE LOCATIONS PER DETAIL ON SHEET E-103
 3. PROVIDE ALL REQUIRED MATERIALS AND LABOR TO RETURN DISTURBED SURFACES TO EXISTING CONDITIONS, INCLUDING BUT NOT LIMITED TO GRASS, GRAVEL PATH, AND ASPHALT PATH

[illegible]

16. MAINTENANCE MANUALS
- 16.1. PROVIDE OPERATION AND MAINTENANCE DATA FOR INCORPORATION INTO MAINTENANCE MANUALS AS FOLLOWS IN HARD COVER 3 RING BINDER C/W INDEX TAB SEPARATORS. PROVIDE THREE (3) HARD COPIES AND ONE (1) PDF SOFTCOPY. SOFTCOPY MAY BE SUBMITTED USING COMPACT DISC, USB FLASH DRIVE OR EMAIL.
- 16.2. TECHNICAL DATA, PRODUCT DATA, SUPPLEMENTED BY BULLETINS COMPONENT ILLUSTRATIONS, EXPLODED VIEWS, TECHNICAL DESCRIPTIONS OF ITEMS AND PARTS LISTS. (ADVERTISING OR SALES LITERATURE IS NOT ACCEPTABLE)
- 16.3. WIRING AND SCHEMATIC DIAGRAMS NAMES AND ADDRESSES OF LOCAL SUPPLIERS FOR ITEMS INCLUDED IN MAINTENANCE MANUALS.
-
- The diagram shows a vertical pole with a luminaire arm at the top. The pole is labeled '5" ROUND STRAIGHT STEEL POLE PAINTED BLACK'. The luminaire arm is labeled 'LUMINAIRE ARM' and the luminaire is labeled 'LUMINAIRE TYPE AS INDICATED ON LAYOUT DRAWINGS. REFER TO LUMINAIRE SCHEDULE FOR DETAILS.' The pole has a 'HANDHOLE' and is supported by a 'TYPE B CONCRETE BASE C/W 2x 23mm CONDUITS'. The base is shown in cross-section with dimensions: 1500 mm height, 75 mm width, and 500 mm diameter. The base is set in a 'FINISHED GRADE' and a 'PATHWAY' is indicated. The pole is labeled 'ALL POLE MATERIALS INCLUDING POLE, BASE, HANDHOLE, BOLTS & NUTS SHALL BE GALVANIZED'.
- 16.4. PROVIDE A LUMINAIRE SCHEDULE WITH THE FOLLOWING INFORMATION:
- 16.4.1. LUMINAIRE TYPE AND DESCRIPTION
- 16.4.2. LUMINAIRE MANUFACTURER
- 16.4.3. LUMINAIRE WATTAGE
- 16.4.4. LUMINAIRE VOLTAGE
- 16.4.5. LUMINAIRE LUMEN OUTPUT
- 16.4.6. LUMINAIRE BEAM ANGLE
- 16.4.7. LUMINAIRE MOUNTING HATCH
- 16.4.8. LUMINAIRE MOUNTING HATCH
- 16.4.9. LUMINAIRE MOUNTING HATCH
- 16.4.10. LUMINAIRE MOUNTING HATCH
- 16.4.11. LUMINAIRE MOUNTING HATCH
- 16.4.12. LUMINAIRE MOUNTING HATCH
- 16.4.13. LUMINAIRE MOUNTING HATCH
- 16.4.14. LUMINAIRE MOUNTING HATCH
- 16.4.15. LUMINAIRE MOUNTING HATCH
- 16.4.16. LUMINAIRE MOUNTING HATCH
- 16.4.17. LUMINAIRE MOUNTING HATCH
- 16.4.18. LUMINAIRE MOUNTING HATCH
- 16.4.19. LUMINAIRE MOUNTING HATCH
- 16.4.20. LUMINAIRE MOUNTING HATCH
- 16.4.21. LUMINAIRE MOUNTING HATCH
- 16.4.22. LUMINAIRE MOUNTING HATCH
- 16.4.23. LUMINAIRE MOUNTING HATCH
- 16.4.24. LUMINAIRE MOUNTING HATCH
- 16.4.25. LUMINAIRE MOUNTING HATCH
- 16.4.26. LUMINAIRE MOUNTING HATCH
- 16.4.27. LUMINAIRE MOUNTING HATCH
- 16.4.28. LUMINAIRE MOUNTING HATCH
- 16.4.29. LUMINAIRE MOUNTING HATCH
- 16.4.30. LUMINAIRE MOUNTING HATCH
- 16.4.31. LUMINAIRE MOUNTING HATCH
- 16.4.32. LUMINAIRE MOUNTING HATCH
- 16.4.33. LUMINAIRE MOUNTING HATCH
- 16.4.34. LUMINAIRE MOUNTING HATCH
- 16.4.35. LUMINAIRE MOUNTING HATCH
- 16.4.36. LUMINAIRE MOUNTING HATCH
- 16.4.37. LUMINAIRE MOUNTING HATCH
- 16.4.38. LUMINAIRE MOUNTING HATCH
- 16.4.39. LUMINAIRE MOUNTING HATCH
- 16.4.40. LUMINAIRE MOUNTING HATCH
- 16.4.41. LUMINAIRE MOUNTING HATCH
- 16.4.42. LUMINAIRE MOUNTING HATCH
- 16.4.43. LUMINAIRE MOUNTING HATCH
- 16.4.44. LUMINAIRE MOUNTING HATCH
- 16.4.45. LUMINAIRE MOUNTING HATCH
- 16.4.46. LUMINAIRE MOUNTING HATCH
- 16.4.47. LUMINAIRE MOUNTING HATCH
- 16.4.48. LUMINAIRE MOUNTING HATCH
- 16.4.49. LUMINAIRE MOUNTING HATCH
- 16.4.50. LUMINAIRE MOUNTING HATCH
- 16.4.51. LUMINAIRE MOUNTING HATCH
- 16.4.52. LUMINAIRE MOUNTING HATCH
- 16.4.53. LUMINAIRE MOUNTING HATCH
- 16.4.54. LUMINAIRE MOUNTING HATCH
- 16.4.55. LUMINAIRE MOUNTING HATCH
- 16.4.56. LUMINAIRE MOUNTING HATCH
- 16.4.57. LUMINAIRE MOUNTING HATCH
- 16.4.58. LUMINAIRE MOUNTING HATCH
- 16.4.59. LUMINAIRE MOUNTING HATCH
- 16.4.60. LUMINAIRE MOUNTING HATCH
- 16.4.61. LUMINAIRE MOUNTING HATCH
- 16.4.62. LUMINAIRE MOUNTING HATCH
- 16.4.63. LUMINAIRE MOUNTING HATCH
- 16.4.64. LUMINAIRE MOUNTING HATCH
- 16.4.65. LUMINAIRE MOUNTING HATCH
- 16.4.66. LUMINAIRE MOUNTING HATCH
- 16.4.67. LUMINAIRE MOUNTING HATCH
- 16.4.68. LUMINAIRE MOUNTING HATCH
- 16.4.69. LUMINAIRE MOUNTING HATCH
- 16.4.70. LUMINAIRE MOUNTING HATCH
- 16.4.71. LUMINAIRE MOUNTING HATCH
- 16.4.72. LUMINAIRE MOUNTING HATCH
- 16.4.73. LUMINAIRE MOUNTING HATCH
- 16.4.74. LUMINAIRE MOUNTING HATCH
- 16.4.75. LUMINAIRE MOUNTING HATCH
- 16.4.76. LUMINAIRE MOUNTING HATCH
- 16.4.77. LUMINAIRE MOUNTING HATCH
- 16.4.78. LUMINAIRE MOUNTING HATCH
- 16.4.79. LUMINAIRE MOUNTING HATCH
- 16.4.80. LUMINAIRE MOUNTING HATCH
- 16.4.81. LUMINAIRE MOUNTING HATCH
- 16.4.82. LUMINAIRE MOUNTING HATCH
- 16.4.83. LUMINAIRE MOUNTING HATCH
- 16.4.84. LUMINAIRE MOUNTING HATCH
- 16.4.85. LUMINAIRE MOUNTING HATCH
- 16.4.86. LUMINAIRE MOUNTING HATCH
- 16.4.87. LUMINAIRE MOUNTING HATCH
- 16.4.88. LUMINAIRE MOUNTING HATCH
- 16.4.89. LUMINAIRE MOUNTING HATCH
- 16.4.90. LUMINAIRE MOUNTING HATCH
- 16.4.91. LUMINAIRE MOUNTING HATCH
- 16.4.92. LUMINAIRE MOUNTING HATCH
- 16.4.93. LUMINAIRE MOUNTING HATCH
- 16.4.94. LUMINAIRE MOUNTING HATCH
- 16.4.95. LUMINAIRE MOUNTING HATCH
- 16.4.96. LUMINAIRE MOUNTING HATCH
- 16.4.97. LUMINAIRE MOUNTING HATCH
- 16.4.98. LUMINAIRE MOUNTING HATCH
- 16.4.99. LUMINAIRE MOUNTING HATCH
- 16.4.100. LUMINAIRE MOUNTING HATCH
- 16.4.101. LUMINAIRE MOUNTING HATCH
- 16.4.102. LUMINAIRE MOUNTING HATCH
- 16.4.103. LUMINAIRE MOUNTING HATCH
- 16.4.104. LUMINAIRE MOUNTING HATCH
- 16.4.105. LUMINAIRE MOUNTING HATCH
- 16.4.106. LUMINAIRE MOUNTING HATCH
- 16.4.107. LUMINAIRE MOUNTING HATCH
- 16.4.108. LUMINAIRE MOUNTING HATCH
- 16.4.109. LUMINAIRE MOUNTING HATCH
- 16.4.110. LUMINAIRE MOUNTING HATCH
- 16.4.111. LUMINAIRE MOUNTING HATCH
- 16.4.112. LUMINAIRE MOUNTING HATCH
- 16.4.113. LUMINAIRE MOUNTING HATCH
- 16.4.114. LUMINAIRE MOUNTING HATCH
- 16.4.115. LUMINAIRE MOUNTING HATCH
- 16.4.116. LUMINAIRE MOUNTING HATCH
- 16.4.117. LUMINAIRE MOUNTING HATCH
- 16.4.118. LUMINAIRE MOUNTING HATCH
- 16.4.119. LUMINAIRE MOUNTING HATCH
- 16.4.120. LUMINAIRE MOUNTING HATCH
- 16.4.121. LUMINAIRE MOUNTING HATCH
- 16.4.122. LUMINAIRE MOUNTING HATCH
- 16.4.123. LUMINAIRE MOUNTING HATCH
- 16.4.124. LUMINAIRE MOUNTING HATCH
- 16.4.125. LUMINAIRE MOUNTING HATCH
- 16.4.126. LUMINAIRE MOUNTING HATCH
- 16.4.127. LUMINAIRE MOUNTING HATCH
- 16.4.128. LUMINAIRE MOUNTING HATCH
- 16.4.129. LUMINAIRE MOUNTING HATCH
- 16.4.130. LUMINAIRE MOUNTING HATCH
- 16.4.131. LUMINAIRE MOUNTING HATCH
- 16.4.132. LUMINAIRE MOUNTING HATCH
- 16.4.133. LUMINAIRE MOUNTING HATCH
- 16.4.134. LUMINAIRE MOUNTING HATCH
- 16.4.135. LUMINAIRE MOUNTING HATCH
- 16.4.136. LUMINAIRE MOUNTING HATCH
- 16.4.137. LUMINAIRE MOUNTING HATCH
- 16.4.138. LUMINAIRE MOUNTING HATCH
- 16.4.139. LUMINAIRE MOUNTING HATCH
- 16.4.140. LUMINAIRE MOUNTING HATCH
- 16.4.141. LUMINAIRE MOUNTING HATCH
- 16.4.142. LUMINAIRE MOUNTING HATCH
- 16.4.143. LUMINAIRE MOUNTING HATCH
- 16.4.144. LUMINAIRE MOUNTING HATCH
- 16.4.145. LUMINAIRE MOUNTING HATCH
- 16.4.146. LUMINAIRE MOUNTING HATCH
- 16.4.147. LUMINAIRE MOUNTING HATCH
- 16.4.148. LUMINAIRE MOUNTING HATCH
- 16.4.149. LUMINAIRE MOUNTING HATCH
- 16.4.150. LUMINAIRE MOUNTING HATCH
- 16.4.151. LUMINAIRE MOUNTING HATCH
- 16.4.152. LUMINAIRE MOUNTING HATCH
- 16.4.153. LUMINAIRE MOUNTING HATCH
- 16.4.154. LUMINAIRE MOUNTING HATCH
- 16.4.155. LUMINAIRE MOUNTING HATCH
- 16.4.156. LUMINAIRE MOUNTING HATCH
- 16.4.157. LUMINAIRE MOUNTING HATCH
- 16.4.158. LUMINAIRE MOUNTING HATCH
- 16.4.159. LUMINAIRE MOUNTING HATCH
- 16.4.160. LUMINAIRE MOUNTING HATCH
- 16.4.161. LUMINAIRE MOUNTING HATCH
- 16.4.162. LUMINAIRE MOUNTING HATCH
- 16.4.163. LUMINAIRE MOUNTING HATCH
- 16





-

TYPICAL TRENCH DETAIL - SINGLE
SCALE: NTS



- | CALCULATED LIGHT LEVELS | | | | | |
|--|-------------------|---------------------|---------------------|-----------------------|-----------------|
| PATHWAYS LEVELS
HORIZONTAL ILLUMINATION | | | | | |
| ZONE | TARGET
AVERAGE | ACHIEVED
AVERAGE | TARGET
AVE / MIN | ACHIEVED
AVE / MIN | NOTES |
| PATHWAY - NORTH OF RIVER | >2 lux | 6.8 lux | <10.0:1 | 7.6:1 | PEDESTRIAN: LOW |
| PATHWAY - SOUTH OF RIVER | >2 lux | 6.9 lux | <10.0:1 | 8.6:1 | PEDESTRIAN: LOW |
- NOTES:
- TARGET LIGHT LEVELS ARE AS PER IESNA RP-8-18 FOR OFF-ROADWAY FACILITIES.
 - LIGHT LOSS FACTOR FOR LED LUMINAIRES 0.85.

LIGHTING SYMBOL SCHEDULE		
SYMBOL	DESCRIPTION	NOTES
	POLE MOUNT LUMINAIRE OF TYPE 'A' REFER TO LUMINAIRE SCHEDULE FOR DETAILS	A-##-a PANEL CIRCUIT SWITCH-
	IN GRADE JUNCTION BOX SEE DETAIL ON SHEET E-103	
PC - PHOTOCELL TC - TIMECLOCK DS - DAYLIGHT SENSOR 3 - 3-WAY SWITCHING	<u>LUMINAIRE TAG SCHEDULE</u>	

LUMINAIRE SCHEDULE				
TYPE	DESCRIPTION	LAMPING	MOUNTING	REMARKS
A	LED PATHWAY LIGHT - TYPE 2 DISTRIBUTION	LED 2,200 lm 3000K	POLE 5m AFG	LUMEC POS-24W1LED3K-T-LE2F-120-DBC-1A-BKTX
B	LED PATHWAY LIGHT - TYPE 4 DISTRIBUTION	LED 2,200 lm 3000K	POLE 5m AFG	LUMEC POS-24W1LED3K-T-LE4F-120-DBC-1A-BKTX

0	2022-05-06	ISSUED FOR TENDER			NK	EH TY
Rev	Date	Description			Drawn Design	App'd

THIS DRAWING AND DESIGN IS THE PROPERTY OF MEHLHAYNE AND SHALL NOT BE USED, REUSED OR REPRODUCED WITHOUT THE CONSENT OF MEHLHAYNE. MEHLHAYNE WILL NOT BE HELD RESPONSIBLE FOR THE IMPROPER OR UNAUTHORIZED USE OF THIS DRAWING AND DESIGN.

THIS DRAWING AND DESIGN HAS BEEN PREPARED FOR THE CLIENT IDENTIFIED, TO MEET THE STANDARDS AND REQUIREMENTS OF THE APPLICABLE PUBLIC AGENCIES AT THE TIME OF PREPARATION. MEHLHAYNE, ITS EMPLOYEES, SUBCONSULTORS AND AGENTS, SHALL NOT BE HELD RESPONSIBLE FOR ANY LOSSES OR OTHER CONSEQUENCES RESULTING FROM THE USE OR RELIANCE UPON, OR ANY CHANGES MADE TO, THIS DRAWING BY ANY THIRD PARTY, INCLUDING CONTRACTORS, SUPPLIERS, CONSULTANTS AND STAKEHOLDERS, OR THEIR EMPLOYEES OR AGENTS, WITHOUT MEHLHAYNE'S PRIOR WRITTEN CONSENT.

INFORMATION ON EXISTING UNDERGROUND FACILITIES MAY NOT BE COMPLETE OR ACCURATE. MEHLHAYNE, ITS EMPLOYEES AND DIRECTORS ARE NOT RESPONSIBLE NOR LIABLE FOR THE LOCATION OF ANY UNDERGROUND CONDUITS, PIPES, CABLES OR OTHER FACILITIES WHETHER SHOWN OR OMITTED FROM THIS DRAWING. MEHLHAYNE, ITS EMPLOYEES AND DIRECTORS SHALL NOT BE HELD RESPONSIBLE FOR ANY DAMAGE DURING DIGGING OR HYDROVAC AND ASSUME THE ENGINEER OF POTENTIAL CONFLICTS.

ORIGINAL DWG SIZE: ANSI D (22" x 34")



Permit

Approved Sealed

DISTRICT OF ELKFORD
744 Fording Drive, Elkford, BC, V0B 1H0

ELKFORD DOWNTOWN REVITALIZATION
PATHWAY LIGHTING
SPECIFICATIONS & DETAILS

Drawing No.

E-103

Project Number	Rev.
2441-01278-00	0